

**CLAGUE PLAYHOUSE** *presents*

# *The Marvelous* **Wonderettes**

Written & Created  
by Roger Bean

Musical Arrangements by Brian William Baker  
Orchestrations by Michael Borth  
Vocal Arrangements by  
Roger Bean & Brian William Baker

Originally Produced for the New York Stage by  
David Elzer, Roger Bean & Peter Schneider.

*The Marvelous Wonderettes* premiered at  
Milwaukee Repertory Theater.

Joseph Hanreddy, Artistic Director and  
Timothy J. Shields, Managing Director.

Directed by Tiffany Trapnell

Music Directed by Zach Palumbo

**March 22 - April 14, 2024**

*The Marvelous Wonderettes* is presented by special arrangement  
with Broadway Licensing, LLC. ([www.broadwaylicensing.com](http://www.broadwaylicensing.com))

## **HOUSE INFORMATION**

In case of FIRE or OTHER EMERGENCY, please walk to the nearest exit indicated by a lighted exit sign.

Please note: Our productions may contain ADULT LANGUAGE.

Clague Playhouse is a NON-SMOKING facility.

RESTROOMS are located in the theater lobby.

FOOD AND BEVERAGES are not permitted in the auditorium.

Local EMERGENCY CALLS may be made at the Box Office.

CAMERAS AND RECORDERS are not permitted in the theater.

Please silence PAGERS, CELL PHONES, ELECTRONIC WATCHES.

SPECIAL NEEDS SEATING, subject to availability, please call.

LATECOMERS will be seated at first convenient pause in the performance.

Please report LOST or FOUND items to the Box Office. We are not responsible for lost or damaged items left unattended.

## **BOX OFFICE INFORMATION**

**BOX OFFICE HOURS:** Wednesday - Saturday from 1PM to 6PM and one hour before curtain time on performance dates. Closed Monday and Tuesday. **PHONE: 440-331-0403 Tickets available online at [bit.ly/ClaguePlayhouseTickets](http://bit.ly/ClaguePlayhouseTickets).**

**ADMISSION:** Adults: \$21, Seniors (60+): \$20, and Students: \$13  
Limited FREE Student tickets for all Thursday performances - call the Box Office for more information.

**PREPAYMENT IS A MUST.** Payment may be made by cash, check, money order, American Express, Discover, MasterCard, Visa, and Clague Playhouse Flexitix or Gift Ticket. Prepaid tickets held at the Box Office should be picked up one half-hour before curtain time.

GROUP DISCOUNTS are available for groups of 20 or more. For more information, please call the Box Office.

GIFT TICKETS are available. Call the Box Office for more information.

CURTAIN TIMES: Performances on Thursday, Friday, and Saturday begin at 8PM. Sunday matinees begin at 2PM.

# The Marvelous Wonderettes

*The Marvelous Wonderettes* celebrates strong female bonds, emphasizing that while relationships with boys and men may change, your best friends are there for life. The timeless barbershop melodies and harmonies bring a lively and contagious energy to the show that will leave audiences dancing their way out of the theatre!

## **Our Cast**

**Amani Green** .....Cindy Lou  
**Sydney Noelle Warren** ..... Betty Jean  
**Hannah Watson** ..... Missy  
**Alexcia Ambroz** ..... Suzy

**Time and place:** Springfield High School Gym, USA

## **Act I: Class of 1958's Super Senior Prom**

1. Mr. Sandman .....Ensemble
2. Sugar and Spice Medley:
  - Lollipop.....Ensemble
  - Sugartime.....Ensemble
3. Chipmunk Cheer.....Ensemble
4. Allegheny Moon .....Ensemble
5. Dream Medley:
  - All I Have to Do is Dream .....Ensemble
  - Dream Lover .....Ensemble
6. Stupid Cupid. ....Suzy
7. Lipstick on Your Collar.....Betty Jean
8. Lucky Lips .....Cindy Lou
9. Secret Love .....Missy
10. Man of My Dreams Medley:
  - Mr. Lee .....Missy, Ensemble
  - Born Too Late.....Ensemble
  - Teacher's Pet .....Ensemble

- 11. Sugar and Spice Reprise .....[Prom Queen Voting]
- 12. Goodnight and Goodbye Medley:  
     Sincerely .....Ensemble  
     Goodnight Sweetheart .....Ensemble
- 13. Hold Me, Thrill Me, Kiss Me .....Suzy, Ensemble

**15-minute Intermission**

**PLEASE NOTE: For the safety of our cast and crew, please do not walk across or touch items on our stage.**

**Act II: 1968, the Class of 1958’s Ten-Year Reunion**

- 14. Heatwave .....Ensemble
- 15. Mr. Sandman Reprise .....Ensemble
- 16. It’s In His Kiss/Wedding Bell Blues .....Missy, Ensemble
- 17. You Don’t Own Me .....Missy, Ensemble
- 18. With This Ring .....Missy, Ensemble
- 19. I Only Want to Be With You .....Betty Jean, Ensemble
- 20. That’s When The Tears Start .....Betty Jean, Ensemble
- 21. It’s My Party .....Betty Jean, Ensemble
- 22. Son of a Preacher Man .....Cindy Lou, Ensemble
- 23. Leader of the Pack .....Cindy Lou, Ensemble
- 24. Maybe .....Cindy Lou, Ensemble
- 25. Suzy’s Medley:  
     Maybe .....Suzy, Ensemble  
     Needle in a Haystack ....Missy, Cindy Lou, Betty Jean  
     Rescue Me .....Suzy, Ensemble  
     Respect .....Suzy, Ensemble
- 26. Thank You and Goodnight .....Ensemble
- 27. Bows .....Ensemble
- 28. Exit Music .....Ensemble

**NOTE TO AUDIENCE:** The videotaping or audio and/or visual recording of this production is a violation of United States Copyright Law and an actionable federal offense.

# About Our Cast



**Alexcia Ambroz** (Suzy) is delighted to make her debut at Clague Playhouse! Favorite

credits include Eurydice in *Sarah Ruhl's Eurydice*, Aphra/Snake in *Children of Eden*, and Little Becky/Mrs. Millennium in *Urinetown the Musical*. She has her BA in acting and directing from Baldwin Wallace University. In her free time she plays guitar or with her puppies, Polly and Windsor. She thanks her dad for being her biggest cheerleader in life.



**Amani Green** (Cindy Lou) is so happy to be involved in her first production at Clague

Playhouse! She has spent most of her time on the Near West Theatre mainstage as Mrs. Corry in *Mary Poppins* (2017), Jetsam in *The Little Mermaid* (2021), Madame in

*Rodgers and Hammerstein's Cinderella* (2022), and as Maud Dunlop in *The Music Man* (2022). She also played the roles of Jergens and Joanne in the recent Cleveland premiere of *Rocky the Musical* at Blank Canvas Theatre (2023). She grew up as a third culture kid in Cairo, Egypt, and completed a Bachelor's and Master's degrees in psychology at Stanford University. She hopes you enjoy the show!



**Sydney Noelle Warren** (Betty Jean) is excited to do her first show at Clague

Playhouse! She is a graduate of Baldwin Wallace University with a BA in film studies and a minor in theater. Some previous roles include Cinderella in *Rogers and Hammerstein's Cinderella*, Sheila Franklin in *HAIR*, and Gynecia in *Head Over Heels*. Sydney is happy to work with Tiffany, Zach, and the fabulous Wonderettes!

# About Our Cast *continued*

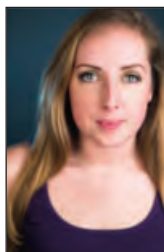


**Hannah Watson** (Missy) is overjoyed to make her Clague debut with this wonderful

artistic team. Some recent roles include Ensemble in *All Shook Up*, Corie in *Barefoot*

in the Park, and Shelby in *Steel Magnolias*. Hannah would like to extend love and gratitude to Erin and Casey for pulling her out of haitus in 2019, her mother for being at every performance possible, and to all of her other friends and family that continue to support her.

# About Our Production Staff



**Tiffany Trapnell** (Director) is proud to embark on her directorial debut at Clague Playhouse, following a successful stage presence in productions such as

*The Explorers Club*, *These Shining Lives*, and *Same Time, Next Year*. Since graduating from Baldwin Wallace University, Tiffany has been engaged in stage management roles, with notable experiences at renowned venues including Jacob's Pillow Dance Festival, Gateway Playhouse, Priscilla Beach Theatre, and Theatre West Virginia.

**Zach Palumbo** (Music Director) is an actor, musician, software engineer, and first-time music director based in Cleveland. Favorite credits as an actor include Eugene in *Broadway*

*Bound* at Beck Center for the Arts, Feste in *Twelfth Night* at the Ohio Shakespeare Festival, and *SpongeBob SquarePants* in the Cleveland premiere of *The SpongeBob Musical* at Blank Canvas Theatre. He has also performed with Cleveland Public Theatre, none too fragile, convergence-continuum, Rubber City Theatre, Lakeland Civic Theatre, French Creek Theatre, Near West Theatre, and the BorderLight International Theatre Festival, among others. He composes music and plays keys for his band Future Perfect, whose lead single "Liftoff!" is available on Spotify and Apple Music. Up next: *The Wizard of Oz* at the Ohio Shakespeare Festival! Love always to his family, friends, and Nicole. zachpalumbo.com

**Diana D'Alessandro** (Assistant to the Director) Over the last 20+ years, Diana has been involved

# About Our Production Staff *continued*

with nearly 70 productions at Beck Center for the Arts, Cassidy, Clague Playhouse, Huntington, Lakeland and Lorain Community theaters. Stage Management credits at Clague Playhouse include *Failure: A Love Story* and *The Curious Savage*. Other favorites include *Gypsy*, *Lady Day at Emerson's Bar and Grill*, *The Pitman Painters*, *Forever Plaid*, *Hairspray*, and *Billy Elliott*. Thanks to the Production Team and Crew! Love to Patrick.

**Sydney DeMatteis-Geib** (Costume Designer) is a graduate from Belmont University with a BFA in Fashion Design. Sydney works as a Staff Assistant Costume Designer at IBG Designs. Her work has been contributed to many theater and film productions as well as commercials and art installations. Most recently Sydney has designed *All Shook Up*, *Sweeney Todd: The Demon Barber of Fleet Street* and *Legally Blonde: The Musical* at The Millennial Theater Project, *Ada and the Engine* and *Failure: A Love Story* at Clague Playhouse, *The Music*

*Man at Near West Theatre*, and *The Agitators* at Rubber City Theatre. Sydney is excited to be back at Clague for *The Marvelous Wonderettes*.

**Dred Geib** (Prop Manager) is a production designer for IBG Designs and specializes in properties, costumes, and sets. Working over the last decade in the Northeast Ohio area he focuses mainly in theater, film, and art installation. Dred is happy to be back this season working on Clague's production of *The Marvelous Wonderettes*.

**Jeff Lockshine** (Lighting Designer) has designed the lighting for more than 100 productions throughout Northeast Ohio and beyond and is always delighted to return to Clague Playhouse—his 'home' theater. At Clague, he also directed *Suds!* and appeared onstage in *Lost in Yonkers*. Jeff obtained an MFA in Production Design & Technology from Ohio University and is happy to welcome you back to live theater!

## GENE'S PLACE TO DINE

3730 Rocky River Drive  
Cleveland, OH 44111

### FAMILY DINING

Sunday-Thursday 8am-2pm  
Friday & Saturday 8am-8pm

**(216) 252-1741**



# About Our Production Staff *continued*

**Dan Mayer** (Sound Designer) received his formal training at The Ohio State University and shortly after graduating, moved to Chicago for Technical Production and Sound Design work. He gained his experience at Chicago's flagship children's theater, Emerald City Theatre Company as their resident A/V Engineer and as an Assistant Technical Director at Northeastern Illinois University, then took his talents to Miami at the Arsht Center as a Head A/V Engineer. Now with a growing and extremely supportive family, he continues to hone and expand his design portfolio as he works as a Lead A/V Media Technician at Tri-C as well as

offering design work to nearby productions.

**Ron Newell** (Set Designer) Clague Playhouse is glad to have Ron onboard for our 96<sup>th</sup> season adding to his long list of achievements in theatre starting in 1956.

His journey includes the worlds of stage, screen and television, commercials, industrial films, sets and staging for the world of high fashion and classical music and on and on...

In 1982, Ron decided to turn professional, joining Actors Equity, SAG/AFTRA of which he is a proud member.

Along the way there were stops to pick up a few awards. The Northern Ohio Live Award for

## WOMEN IN HISTORY

STEPPING OUT OF THE PAGES TO TELL THEIR STORIES



**LIVE** and **VIRTUAL PERFORMANCES** can be adapted to suit the needs of any audience. Performing for schools, churches, civic groups, private clubs, libraries, senior centers, and Chautauqua Festivals for over thirty years.

**BOOKING NOW!**

Visit online: [www.womeninhistoryohio.com](http://www.womeninhistoryohio.com)

Call 216-228-4779 or email [women@womeninhistoryohio.com](mailto:women@womeninhistoryohio.com)



# About Our Production Staff *continued*

Achievement for *Angels in America Part 1 and 2* at Dobama Theatre, Times Newspaper - Set Design Berea Summer Theatre, *The Will Rogers Follies*, Cleveland Critics Award - Set Designs and Performance, Dobama, Ensemble, Berea Summer Theatre and Playhouse Square.

When asked about the future Ron replied, "When it gets here, I'll deal with it!"

"To you, our audience, for attending live theatre - I can only offer my thanks, my love and respect...and of course *The Marvelous Wonderettes* ...Enjoy the Show!"

Of course all would not be possible without the love of MLSQPOODDHKR. – Ron

**Amanda Nyx** (Stage Manager) is excited to once again be backstage for her fourth production at Clague Playhouse! Amanda has been seen on, back, and off stage at various theaters around Cleveland, with recent acting credits including *Cemetery Calling* (Faith) at convergence-continuum and *All in the Timing* (Mrs Trotsky) at Tri-C. You'll find her backstage as often as she is on, working as a stage manager, set designer and builder, or supporting productions in any number of other capacities. Outside of the theater, she is also a fire dancer, teaching artist, and installation artist.

**Jailyn Sherell Harris** (Choreographer) is a native of Cleveland, Ohio and a graduate of Bowling Green State University, where she received

her BAC in theatre, with a minor in dance. As a performer, she has had the opportunity to perform in film, festivals, arenas and in theaters across Northeast Ohio and beyond with credits from Dobama Theatre, Ohio Shakespeare Festival, Ensemble Theatre, Karamu House, Lakeland Civic Theatre, the Players Guild Theatre, and the A.R.T. in Cambridge, Massachusetts. She enjoys working on and developing new works and had the opportunity to perform in the world premiere of *Heartbreakers in Hell* by Joey Contreras and Benjamin Halstead (Rubber City Theatre). Directing credits include a staged reading of the new musical *Wishful Thinking* by Jamie Maletz and a virtual production of *Ragtime* with M.A.D. Factory Theatre. Jailyn has a strong dance background and extensive experience in Jazz, Hip Hop, step and Musical Theatre. She is an inaugural member of MadJax Dance Company. Jailyn has choreographed for theaters and organizations across the northeast Ohio area and beyond, including the Sitar Arts Center in Washington, DC.

## **Our Musicians**

**Christina Cruder** (Woodwinds) has a Master's Degree in music from Carnegie Mellon University. Her recent work includes national tours of: Christmas Carol, IL Divo, Celtic Thunder, Indigo Girls, SuperTramp, Alan Parson's Project, and Frankie Valli. She appeared on recent album recordings of "Christmas

# About Our Production Staff *continued*

Wrapping” and “I know what girls like” by the band The Waitresses. When not performing music she works as a web developer helping non-profits across the country.

**Paige Morris** (Piano II) is delighted to be performing for her first time at Clague Playhouse Community Theater. She has most recently performed as second piano for Porthouse Theatre's production of *The Marvelous Wonderettes*. Some of her other credits include *Anything Goes*, *Mary Poppins*, and *Company*. A graduate of Mount Union's Piano Performance program and Kent State's Master of Arts in Teaching program, Paige has

enjoyed fifteen years as a professional pianist and music educator. There's no place she'd rather be than in the pit!

**Taylor Pohlig** (Drums) - This is Taylor's first time working at Clague Playhouse! He's previously performed as a percussionist for the Marine Corps Band out of Parris Island, SC and got a chance to moonlight at the Arts Center of Coastal Carolina during his enlistment. Since moving to Cleveland in 2013, he's also performed for a variety of theaters including Cleveland Playhouse, Brecksville Theater, Cassidy Theater, Near West Theater, Blank Canvas, and French Creek.

## About the Author

**Roger Bean** created the long-running Off-Broadway smash hit *The Marvelous Wonderettes* (Westside Theatre), along with the sequels *Wonderettes: Caps & Gowns*, *Winter Wonderettes*, and *Wonderettes: Dream On*. Original cast albums for all *Wonderettes* shows are available from iTunes and Amazon. *The Marvelous Wonderettes* received the 2007 LA Ovation Award for Best Musical for its record-breaking Los Angeles run and continues to be an audience favorite in regional and amateur theatre companies throughout the country. Mr. Bean's doo-wop hit *Life Could Be A Dream* had a record-breaking 12-month run in Los Angeles, receiving the Los Angeles Drama Critics Circle Award, the LA Weekly Theatre Award, and the Backstage Garland Award for Outstanding Musical.

Mr. Bean wrote and created the popular jukebox musicals *Summer of Love*, *The Andrews Brothers*, *Route 66*, *Honky Tonk Laundry*, and *Why Do Fools Fall In Love?*, all currently available through Broadway Licensing. Additional musicals created by Mr. Bean include *Don't Touch That Dial!*, *That's Amoré*, and *Beach Blanket Bash*.

# Production Staff

Production Manager.....	Lance Switzer
Director.....	Tiffany Trapnell
Music Director .....	Zach Palumbo
Assistant to the Director .....	Diana D'Alessandro
Stage Manager .....	Amanda Nyx
Lighting Designer.....	Jeff Lockshine
Sound Designer .....	Dan Mayer
Set Designer .....	Ron Newell
Choreographer .....	Jailyn Sherell Harris
Costume Designer.....	Sydney DeMatteis-Geib
Prop Manager .....	Dred Geib
Tech Crew .....	Christina Easter, Mary Kahelin
Musicians .....	Christina Cruder (Woodwinds) Blake Kniola (Bass), Paige Morris (Piano II) Taylor Pohlig (Drums), Sean Siebert (Bass)
Set Construction.....	Chuck DoBroka, Donna Hughes Connie Kytler, Charlie Moran, Ron Newell Bill Nordgren, Kathy Whitmore
Props Procurement .....	Gig Giauque, Margy Haas Donna Nordgren
Bookholder .....	Nita Marie Bedocs
Ushers.....	Dottie Palazzo, Barbara Moran
Program & Website .....	Pam Kilpatrick

# Acknowledgements

Minuteman Press Westlake  
Sherry's Custom Dry Cleaners – 216-860-4779  
Studio South Photography – Terry Schordock

## OUR MARVELOUS MUSIC

Music Clearance by Rubicon II Music Clearance, Burbank, CA.  
All Songs Used By Permission. All Rights Reserved.  
All International Copyrights Secured.

*All I Have To Do Is Dream* by B. Bryant © courtesy of House of Bryant Publications.

*Allegheny Moon* by Al Hoffman & Dick Manning ©1956 (renewed) Music Sales Corporation (ASCAP), Al Hoffman Songs, Inc. (ASCAP).

*Born Too Late* by Charles Strouse & Fred Tobias © Used by special arrangement with Williamson Music, on behalf of Charles Strouse Music (ASCAP). All rights for Fred Tobias courtesy of Holee Music.

*Chipmunk Cheer* © Courtesy of Steele Spring Stage Rights.

*Dream Lover* by Bobby Darin © Used by arrangement with Alley Music Corporation, and Trio Music Company, Inc.

*Goodnight, Sweetheart, Goodnight* © words and music by Calvin Carter & James Hudson, Used through the courtesy of Arc Music Corp. (BMI)

*(Love is Like A) Heatwave* by Edward Holland, Jr., Lamont Dozier & Brian Holland © Stone Agate Music, courtesy of EMI Music Publishing.

*Hold Me, Thrill Me, Kiss Me* by Harry Noble, Jr. © EMI Mills Music, Inc.

*I Only Want To Be With You* by Mike Hawker & Ivor Raymonde ©1963 (renewed) Chappell Music Ltd. (PRS) All rights on behalf of Chappell Music Ltd. (PRS) administered by Chappell & Co. (ASCAP)

*It's In His Kiss (The Shoop Shoop Song)* by Rudy Clark © Used by permission of Trio Music Company, Inc.

*It's My Party* by Herb Weiner, John Gluck & Wally Gold ©1963 Chappell & Co. (ASCAP)

*Leader Of The Pack* by Jeff Barry, Ellie Greenwich & George Morton © Screen Gems-EMI Music Inc.

*Lipstick On Your Collar* by George Goehring, Edna Lewis ©1959 (renewed) Chappell & Co. (ASCAP)

*Lollipop* by Beverly Ross & Julius Dixon © Used by arrangement with Edward B. Marks Music Company

*Lucky Lips* by Jerry Leiber & Mike Stoller © Sony/ATV Music Publishing LLC

*Maybe* by Richard Barrett © EMI Longitude MusicRider

*Maybe I Know* by Jeff Barry & Ellie Greenwich © Used by arrangement with Universal – Songs of Polygram International, Inc. (BMI) and Trio Music Company, Inc.

## **Our Marvelous Music** *continued*

- Mr. Lee* by Reather Dixon, Helen Gathers, Emma Pought, Jannie Pought & Laura Webb ©1957 (renewed) Unichappell Music, Inc. (BMI) & PRE Music Company (BMI)
- Mr. Sandman* by Pat Ballard © Used by permission of Edwin H. Morris & Company, a Division of MPL Communications Inc.
- Needle In A Haystack* by William Stevenson and Norman J. Whitfield © Stone Agate Music, courtesy of EMI Music Publishing
- Rescue Me* by Raynard Miner & Carl Smith © Used through the courtesy of Chevis Publishing Corp.
- Respect* by Otis Redding © Irving Music, Inc. (BMI)
- Secret Love* by Sammy Fain & Paul Francis Webster ©1966 WB Music Corp. (ASCAP)
- Sincerely* words and music by Alan Freed & Harvey Fuqua © Irving Music, Inc., on behalf of Alan Freed Music (BMI) © Liason II Music Publishing (BMI)
- Son Of A Preacher Man* by John Hurley & Ronnie Wilkins © Sony/ATV Songs LLC
- Stupid Cupid* by Howard Greenfield & Neil Sedaka © Screen Gems-EMI Music, Inc.
- Sugartime* by Otis Echols Jr. & Charlie Phillips © Used by permission of MPL Communications, Administered by Melody Lane Publications, Inc.
- Teacher's Pet* by Joe Lubin © Courtesy of Daywin Music (BMI), Administered by Careers-BMG Music Publishing, Inc. (BMI)
- Thank You And Goodnight* by Bob Feldman, Jerry Goldstein, Richard Gottehrer & Marty Sanders © Courtesy of Grand Canyon Music, Inc.
- That's When The Tears Start* by Van McCoy © courtesy of Van McCoy Music, Inc.
- Wedding Bell Blues* by Laura Nyro © EMI Blackwood Music, Inc.
- With This Ring* by Luther Dixon, Anthony Hester & Richard Wylie © Twenty-Nine Black Music, Mietus Copyright
- You Don't Own Me* by John Madara, David White ©1963 Unichappell Music, Inc. (BMI)

# **Lobby Gallery Display**

During the run of *The Marvelous Wonderettes*, the works by **Emily Szalkowski** will be on display in our lobby.

## ***Welcome to the Little World Inside my Head***

I am an artist. I love to draw weird stuff. I rarely think about what I am going to draw, it just happens.

I love to buy new sketch books and markers before using the ones I already have. I love going to public events just to sit on the ground and draw.

I have ADHD, anxiety and am on the Autistic spectrum. I also struggle with self-esteem issues.

I love goth clothes. Black is my signature color. I sometimes get weird looks when I am out or even laughed at. I would rather deal with that than be someone I am not.

I am Emily. I am super weird and goofy, but I also do my best to be a great business-woman, a loving daughter/sister/friend, and all around just the best person I can be. I love being Emily, Emily is me.

The lobby gallery is open during Box Office hours, Wednesday through Saturday 1-6PM and one hour before the performances on Thursday, Friday and Saturday at 8PM and Sunday at 2PM.

We are happy to showcase local artists in our Lobby Gallery. If you are interested in displaying your artwork, please email [GalleryArtist@ClaguePlayhouse.org](mailto:GalleryArtist@ClaguePlayhouse.org) or call the Box Office at 440-331-0403 Wednesday through Saturday from 1-6PM.



# **CLAGUE PLAYHOUSE DONATIONS**

Please consider a donation to Clague Playhouse. Contributions help us to maintain the professional quality of our productions and keep ticket prices low. All donors are listed in the current program, receive a quarterly newsletter, a special priority period to purchase tickets and may attend membership meetings. Donations are tax deductible to the extent allowed by law. Clague Playhouse is certified as a 501(c)(3) non-profit organization.

*Thank you to the following Donors for our 2023-2024 Season.*

*Donations received April 1, 2023 through March 10, 2024*

**PACESETTER** (\$5,000 or more)  
Marie & Gary Aheimer

**ANGEL** (\$1,000 to \$4,999)  
Carol Barnak  
Mary Kay Blantz  
Richard & Maryanne Cullom  
Patricia McRoberts

**PRODUCER** (\$500 to \$999)  
Anonymous  
Janice & Jack Campbell  
Y.K. Giauque  
Carol & David Gould  
Dottie Palazzo  
Linda Schlageter  
Schumann Family Fund  
Linda & Roger Stewart

**STAR PERFORMER** (\$200 to \$499)  
Rachel Abernethy  
Nancy & Tom Allen  
David & Marita Almquist  
Debbie & Bill Doty  
Zoe Harper  
Dennis & Julie Laurich  
Eleanor McLaughlin  
Carol Riordan  
Don & Eileen Vernon

**BENEFACTOR** (\$100 to \$199)  
Anonymous  
Anne Benjamin  
David Bennhoffer  
Don & Emese Blankenship  
Randy & Cheryl Bowman  
Georgia A. Burley  
Eloise Elikofer  
Dean Fisher &  
Nancy McCann

Mark & Doreen French  
Peggy & Joe Gibbons  
Christa Gordon  
Catherine Grimes  
Margy & Len Haas  
Linda Harris  
Patricia Harrison  
Dale A. Hruska  
Sarah Hughes & Fred Rice  
Daniel Johnson  
Stan & Kathy Kanderski  
Neal Kowalski  
Janet Kuss  
Emily Lockshine & Tim Peck  
Michael P. Maloney,  
Attorney At Law  
Mary B. Marks  
Regina M. McCarthy  
Barb & Charlie Moran  
Dolores A. Morgan  
Marcia Nauts  
Janice & Lew Patterson  
Phyllis & Richard Reuss  
Laura & James Riegelmayr  
Bob & Chris Shockey\*  
David Stead  
Gene & Nora Svatek  
Stage Door Honeys  
Lou & Sylvia Will  
Leah Wolfe

**THESPIAN** (\$50 to \$99)  
Joseph J. Allotta  
Anonymous  
George Bakalar  
Ray & Judy Budoj  
Pat Carroll &  
Diana D'Alessandro

The Cochrans & The Kayes  
Howard & Deb Doughty  
Barb Dragony  
Greg Dziama & Terry Brosky  
Elsa's Cronies  
Howard & Lucy Evans  
Kate Fayen  
David Hulligan  
Russ & Pam Kilpatrick  
Joe Konen &  
Paula Campbell  
Rose Leininger  
Kevin and Barbara McGraw  
Lynna & Jim Metrisin  
Kimberly & Allan Mitschke  
Brian Pedaci  
Deborah & April Pollard  
Bob & Karen Pritchard  
Jean & Jay Rounds  
Jim & Fran Schoch  
Kathleen Seman  
Johanna Sfisco &  
James Czajkowski  
Al & Cathy Smith  
Thomas & Diane Spence  
Kelly Strand  
Pat Synan Strom  
Annette Tabar  
Lou E. Toomey  
Tom & Kathy Vasko  
Noel L. Whiteside  
Kathy Whitmore  
Lani & Tim Wood  
**PATRON** (\$25 to \$49)  
Laura Andreano  
Anonymous  
Bruce & Jennifer Barden

# **DONATIONS** *continued*

## **PATRON** *continued*

Nancy A. Chopp  
Rosemarie Cipra  
Molly Cornwell  
Kathy Curtis  
Jennifer Cyrill  
Robert Hawkes  
Becky & Joe Hricovec  
Ellyn Kilpatrick  
Candace Lipton  
Jeff Lockshine  
Teresa Lowery  
Tony Marini  
Marianne McGuire  
Jon & Meredyth McKenzie  
Robert and Moira McNutt  
Jane Miller  
S.W. Mortensen  
Karen & Frank Novak  
Amanda Nyx  
Mila F. Roberts  
Bob Sammon  
Jack & Joy Smith  
Laura Starnik  
Lance Switzer  
Carol Thompson  
Larry & Georgeann  
Tremaglio  
Margaret Watterson  
Lisa L. Wiley  
Women's Committee of GLT

## **MATCHING GIFT**

Eaton Corp.\*

## **IN HONOR OF**

### **PERSIS SOSIAK**

KV & Alayne  
Gopalakrishna

## **IN MEMORY OF...**

### **DOUG, JUNE & SCOTT FISHER**

Gayle Fisher

### **JEAN HARTMAN**

Donna Miller

### **SHELDON LAWRENCE**

Janet Kuss

### **CHARLOTTE LEE**

Mary Kay Blantz

### **LEE MACKEY**

Bernice Bolek  
Janice Brundage  
Catherine Janke  
Ron Newell &  
Mimi Schwensen

### **RICHARD OLSEN**

Arlene Olsen

### **BARB SUTTON**

Julia Bajda

### **GEORGE THEIS**

Anonymous  
Bernice Bolek  
Y.K. Giaque  
Russ, Pam & Ellyn  
Kilpatrick

Suzy Mazur  
Dottie Palazzo  
Bruce Taber

### **WARREN WILLIAMS**

Rita Williams

### **NAME-A-SEAT**

The Dragony Family

### **STREET SIGN FUND**

Laura Andreano  
George Bakalar  
Carol Barnak  
Michael Clark  
Bill & Debbie Doty  
Donna Gluvna  
Dale A. Hruska  
Dorothy Palazzo  
Lindy Szetela

### **HONORARY LIFETIME MEMBERS**

Bernice Bolek  
Barbara Brown  
Charlotte Crews  
Y.K. Giaque  
Margy Haas  
Zoe Harper  
Russ Kilpatrick  
Candace Lipton  
Richie Lynch  
Ron Newell



# **STORAGE**

## **MILL RIVER INDOOR SELF STORAGE**

25300 BAGLEY

OLMSTED FALLS OHIO 44138

**440-235-6463**

## **WESTLAKE INDOOR SELF STORAGE**

27310 DETROIT RD

WESTLAKE OHIO 44145

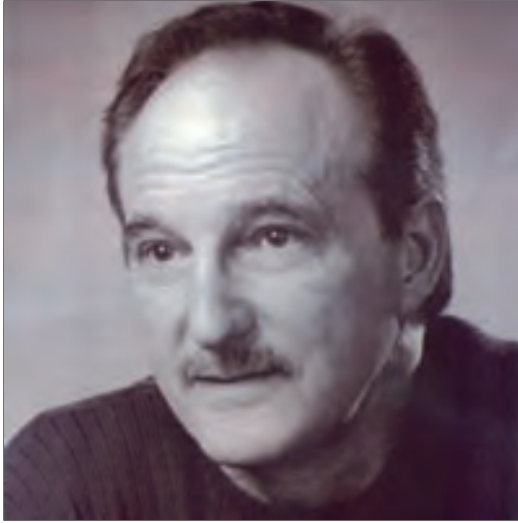
**440-835-8030**

\* HEATED  
\* WELL LIT  
\* CAMERAS  
\* ALARMS

\* UHAUL RENTALS  
\* MOVING SUPPLIES  
\* AFTER HOUR ACCESS  
\* CLEAN & DRY



# Remembering **Ed Dragony** Actor-Crew-Supporter



A 35-year member of the local theater community,

Ed wishes he were on stage tonight. So do we.

Ed's passion was to entertain and to spread happiness.

He attended the shows of everyone he knew.

May his spirit of love and kindness live on

through the many lives he touched.

*The Dragony Family*

***SERPENTINI***  
***of Westlake***



Playing the role of  
***RELIABLE***  
***PROFESSIONAL***



***SINCE 2003.***

Professional Painters.  
Exceptional Carpenters.  
Expert Project Planners.  
Dedicated Problem Solvers.

**440.835.5611**  
**[www.pattonpainting.com](http://www.pattonpainting.com)**

# **CLAGUE PLAYHOUSE BOARD OF DIRECTORS**

President: Peter Toomey

Vice President: Dottie Palazzo

Secretary: Mary Kay Blantz

Treasurer: Laura Andreano

Production Manager: Lance Switzer

Dr. Greg Dziama

Jeff Lockshine

Lisa L Wiley

Kate Fayen

Charlie Moran

Visit our website, [www.ClaguePlayhouse.org](http://www.ClaguePlayhouse.org), Facebook page or Instagram for a complete look at our season, purchase tickets, audition dates, and up-to-date information on what's happening at Clague Playhouse.

*Clague Playhouse is certified as a 501(c)(3) non-profit organization.*

## **Our Next Production:**

# **SOUVENIR**

by Stephen Temperley

Directed by Anne McEvoy

**May 17 - June 9, 2024**

A musical odd-couple for the ages: *Souvenir*, by turn hilarious and poignant, tells the story of Florence Foster Jenkins through the eyes of her accompanist, Cosme McMoon. Her annual recitals in the ballroom of the Ritz Carlton hotel brought her extraordinary fame; the growing mob of fans packed her recitals, stuffing handkerchiefs in their mouths to stifle their laughter—which Mrs. Jenkins blissfully mistook for cheers as she was in fact incapable of producing two consecutive notes in tune. With each new imagined triumph Florence's confidence soars. Faced with her boundless certainty, Cosme comes to revise his attitude, not only towards her singing but to the very meaning of music itself.

Our cast features Corey Knick as Cosme McMoon and Laura Starnik as Florence Foster Jenkins.

Performances on Thursday, Friday, and Saturday at 8PM, and Sunday matinees at 2PM.



## **CLAGUE PLAYHOUSE, INC.**

1371 Clague Road

Westlake, Ohio 44145

**440-331-0403**

[www.ClaguePlayhouse.org](http://www.ClaguePlayhouse.org)